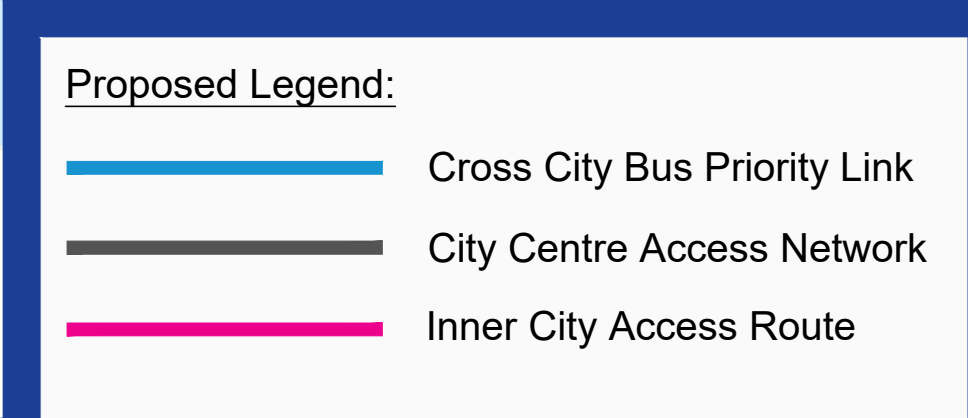
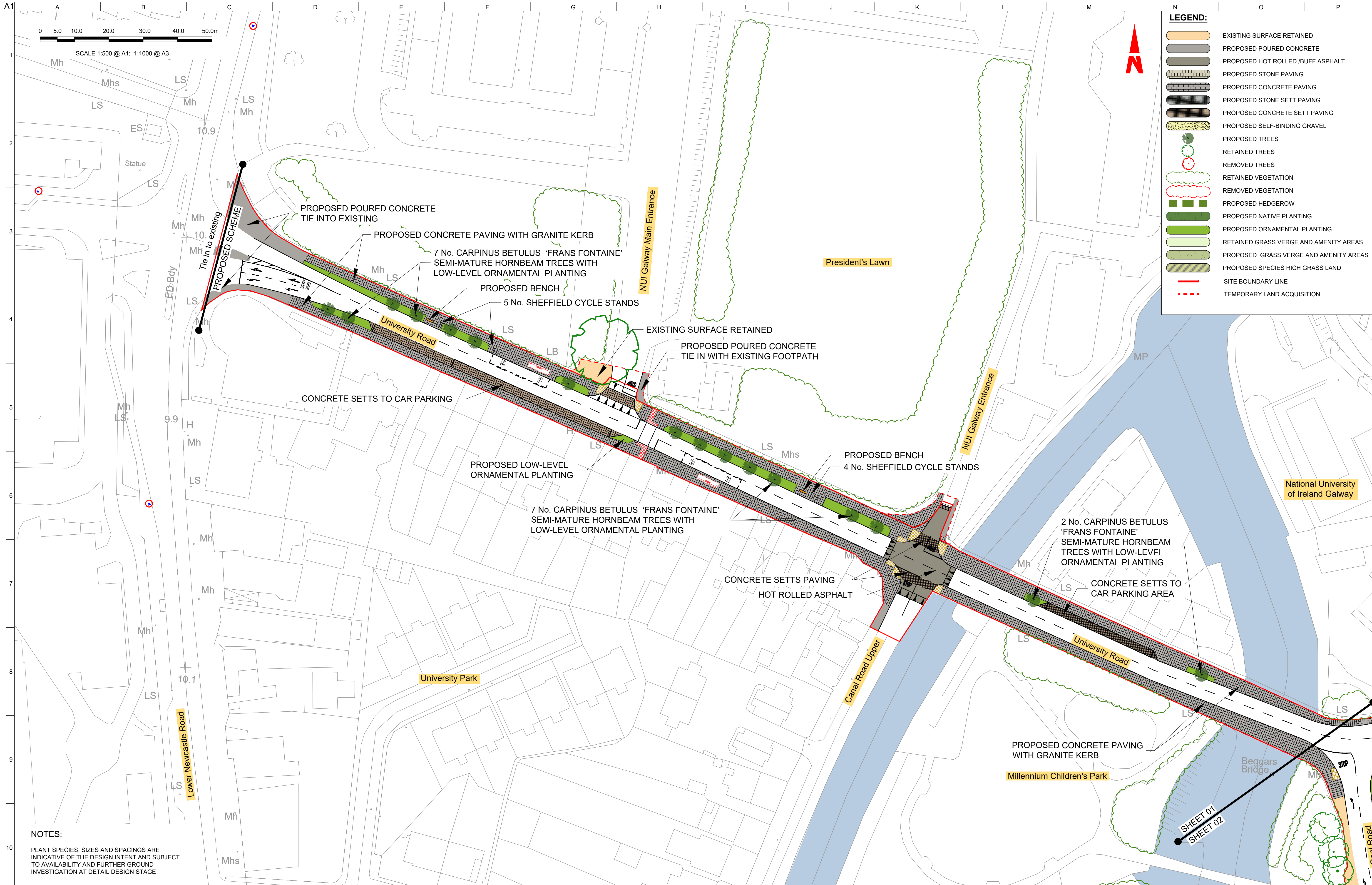


Landscape General Arrangement







Disclaimer

a. © Galway City Council (GCC) 2022. This drawing is confidential and the copyright in it is owned by GCC. This drawing must not be either loaned, copied or otherwise reproduced in whole or in part or used for any purpose without the prior permission of GCC.

b. This drawing is to be used for the design element identified in the titlebox. Other information shown is to be considered indicative only. The drawing is to be read in conjunction with all other relevant design drawings.

c. O.S. data used for plans are printed under © Ordnance Survey Ireland Government of Ireland. All rights reserved. Licence Number EN 0002822 (Anp). All elevations are in metres and relate to OSI Geoid Model (OSGM15) Mean Head. All Co-ordinates are in Irish Transverse Mercator Grid (ITM) as defined by OSI active local GPS station.

d. Information concerning the position of apparatus shown on this drawing is based on drawings supplied by the utility owners and/or the utility works contractor, whilst every care has been taken in the preparation of this drawing, positions should be taken as approximate and are intended for general guidance only and no representation is made by the GCC as to the accuracy, completeness, sufficiency or otherwise of this drawing and the position of the apparatus. The information contained herein does not purport to be comprehensive or final as the apparatus is subject to being altered and/or superseded. Recipients should not rely on this information. Any liabilities are hereby expressly disclaimed.

e. The information contained herein has been provided by the GCC but does not purport to be comprehensive or final. Recipients should not rely on the information. Neither the GCC nor any of its directors, officers, employees, agents, stakeholders or advisers make any representation or warranty as to, or accept any liability or responsibility in relation to, the adequacy, accuracy, reasonableness or completeness of the information provided as part of this document or any matter on which the information is based (including but not limited to loss or damage arising as a result of reliance by recipients on the information or any part of it). Any liabilities are hereby expressly disclaimed.

ARUP

Arup, One Albert Quay,
Cork, T12 X8N6, Ireland
Tel +353 (0)21 422 3200 Fax +353 (0)1 668 3169
www.arup.ie

Client
Galway City Council

Project Title
**BusConnects Galway:
Cross-City Link
(University Road to Dublin Road)**

Drawing Title
Landscaping General Arrangement

Scale at A1
1:500 @ A1 (1:1000 @ A3)

Role	Transport Infrastructure
Suitability	Planning
Arup Job No	253352-00
Name	BCG-LA-00-01
Rev	PL01

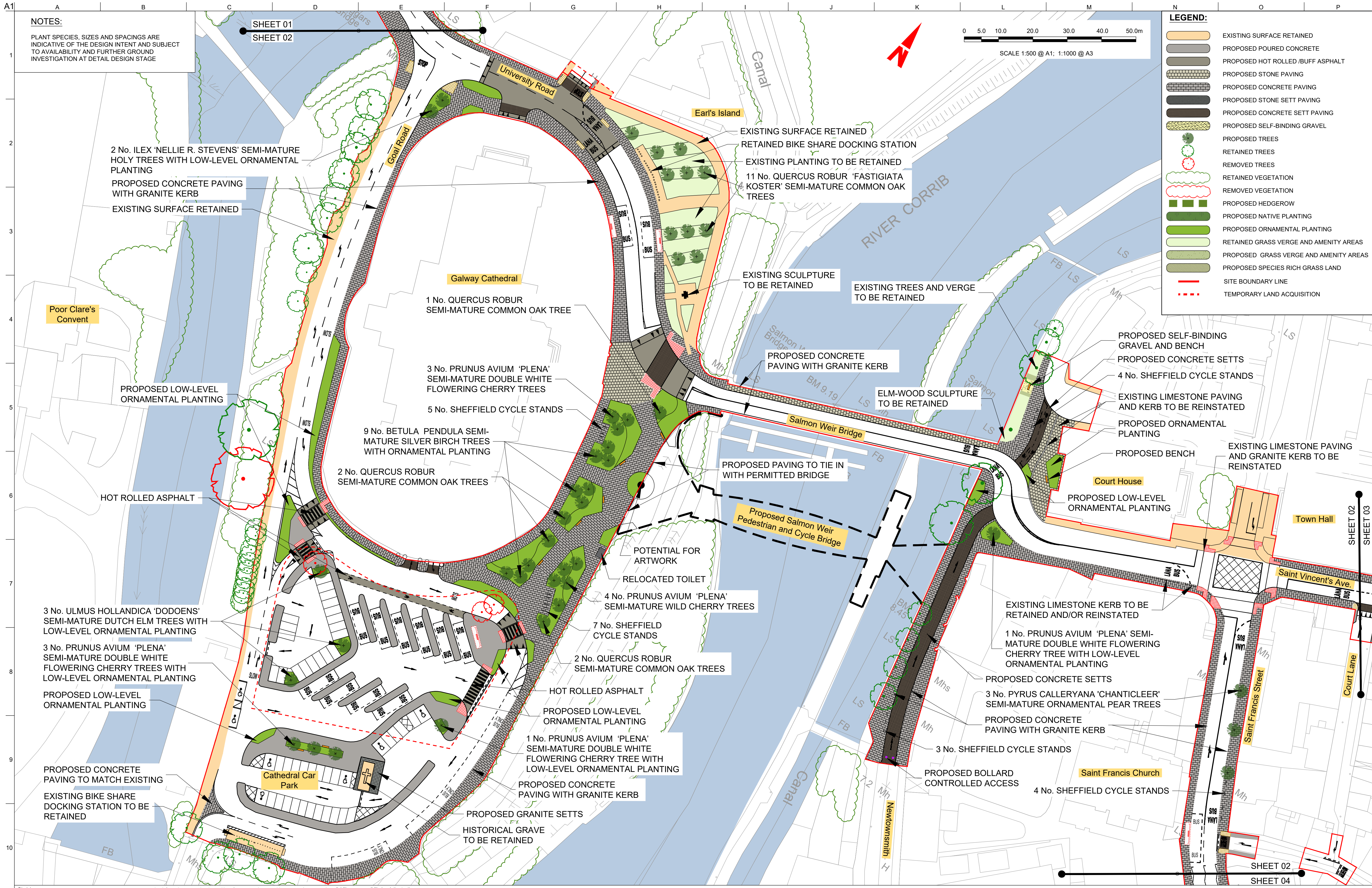
PL01	31/08/22	JV	RN	BB
Issue for Planning				
Rev	Date	By	Chkd	Appd

NTA
Údarás Náisiúnta Iompair
National Transport Authority

Map reproduced from Ordnance Survey Ireland Licence No. EN 0002822 ©
Ordnance Survey Ireland/ Government of Ireland.

Do not scale

© Arup



NOTES:

PLANT SPECIES, SIZES AND SPACINGS ARE INDICATIVE OF THE DESIGN INTENT AND SUBJECT TO AVAILABILITY AND FURTHER GROUND INVESTIGATION AT DETAIL DESIGN STAGE

LEGEND:

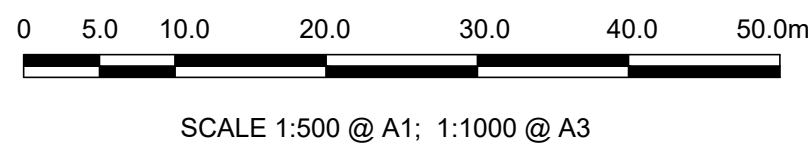
- EXISTING SURFACE RETAINED
- PROPOSED POURED CONCRETE
- PROPOSED HOT ROLLED / BUFF ASPHALT
- PROPOSED STONE PAVING
- PROPOSED CONCRETE PAVING
- PROPOSED STONE SETT PAVING
- PROPOSED CONCRETE SETT PAVING
- PROPOSED SELF-BINDING GRAVEL
- PROPOSED TREES
- RETAINED TREES
- REMOVED TREES
- RETAINED VEGETATION
- REMOVED VEGETATION
- PROPOSED HEDGEROW
- PROPOSED NATIVE PLANTING
- PROPOSED ORNAMENTAL PLANTING
- RETAINED GRASS VERGE AND AMENITY AREAS
- PROPOSED GRASS VERGE AND AMENITY AREAS
- PROPOSED SPECIES RICH GRASS LAND
- SITE BOUNDARY LINE
- TEMPORARY LAND ACQUISITION

Planting Details:


- 2 No. ILEX 'NELLIE R. STEVENS' SEMI-MATURE HOLY TREES WITH LOW-LEVEL ORNAMENTAL PLANTING
- PROPOSED CONCRETE PAVING WITH GRANITE KERB
- EXISTING SURFACE RETAINED
- 1 No. QUERCUS ROBUR SEMI-MATURE COMMON OAK TREE
- 3 No. PRUNUS AVIUM 'PLENA' SEMI-MATURE DOUBLE WHITE FLOWERING CHERRY TREES
- 5 No. SHEFFIELD CYCLE STANDS
- 9 No. BETULA PENDULA SEMI-MATURE SILVER BIRCH TREES WITH ORNAMENTAL PLANTING
- 2 No. QUERCUS ROBUR SEMI-MATURE COMMON OAK TREES
- 3 No. ULMUS HOLLANDICA 'DODOENS' SEMI-MATURE DUTCH ELM TREES WITH LOW-LEVEL ORNAMENTAL PLANTING
- 3 No. PRUNUS AVIUM 'PLENA' SEMI-MATURE DOUBLE WHITE FLOWERING CHERRY TREES WITH LOW-LEVEL ORNAMENTAL PLANTING
- PROPOSED LOW-LEVEL ORNAMENTAL PLANTING
- PROPOSED CONCRETE PAVING TO MATCH EXISTING
- EXISTING BIKE SHARE DOCKING STATION TO BE RETAINED
- 4 No. PRUNUS AVIUM 'PLENA' SEMI-MATURE WILD CHERRY TREES
- 7 No. SHEFFIELD CYCLE STANDS
- 2 No. QUERCUS ROBUR SEMI-MATURE COMMON OAK TREES
- 1 No. PRUNUS AVIUM 'PLENA' SEMI-MATURE DOUBLE WHITE FLOWERING CHERRY TREE WITH LOW-LEVEL ORNAMENTAL PLANTING
- PROPOSED CONCRETE PAVING WITH GRANITE KERB
- PROPOSED GRANITE SETTS
- HISTORICAL GRAVE TO BE RETAINED
- 11 No. QUERCUS ROBUR 'FASTIGIATA KOSTER' SEMI-MATURE COMMON OAK TREES
- EXISTING SCULPTURE TO BE RETAINED
- EXISTING TREES AND VERGE TO BE RETAINED
- PROPOSED CONCRETE PAVING WITH GRANITE KERB
- ELM-WOOD SCULPTURE TO BE RETAINED
- PROPOSED PAVING TO TIE IN WITH PERMITTED BRIDGE
- PROPOSED SELF-BINDING GRAVEL AND BENCH
- PROPOSED CONCRETE SETTS
- 4 No. SHEFFIELD CYCLE STANDS
- EXISTING LIMESTONE PAVING AND KERB TO BE REINSTATED
- PROPOSED ORNAMENTAL PLANTING
- PROPOSED BENCH
- EXISTING LIMESTONE PAVING AND GRANITE KERB TO BE REINSTATED
- 1 No. PRUNUS AVIUM 'PLENA' SEMI-MATURE DOUBLE WHITE FLOWERING CHERRY TREE WITH LOW-LEVEL ORNAMENTAL PLANTING
- PROPOSED CONCRETE SETTS
- 3 No. PYRUS CALLERYANA 'CHANTICLEER' SEMI-MATURE ORNAMENTAL PEAR TREES
- PROPOSED CONCRETE PAVING WITH GRANITE KERB
- 3 No. SHEFFIELD CYCLE STANDS
- PROPOSED BOLLARD CONTROLLED ACCESS
- 4 No. SHEFFIELD CYCLE STANDS

NOTES:

PLANT SPECIES, SIZES AND SPACINGS ARE INDICATIVE OF THE DESIGN INTENT AND SUBJECT TO AVAILABILITY AND FURTHER GROUND INVESTIGATION AT DETAIL DESIGN STAGE

[illegible]

as to, or accept any liability or responsibility in relation to, the adequacy, accuracy, reasonableness or completeness of the information provided as part of this document or any matter or which the information is based (including but not limited to loss or damage arising as a result of reliance by recipients on the information or any part of it). Any liabilities are hereby expressly disclaimed.

The logo for the National Transport Authority (NTA) features a stylized grey arch above the letters 'NTA' in a bold, purple, sans-serif font.

NTA
Údarás Náisiúnta Iompair
National Transport Authority

PL01	31/08/22	JV	RN	BB
Issue for Planning				
Rev	Date	By	Chkd	Appd

ARUP

Arup, One Albert Quay,
Cork, T12 X8N6, Ireland
Tel +353 (0)21 422 3200 Fax +353 (0)1 668 3169
www.arup.ie

Client
Galway City Council

Project Title

**BusConnects Galway:
Cross-City Link
(University Road to Dublin Road)**

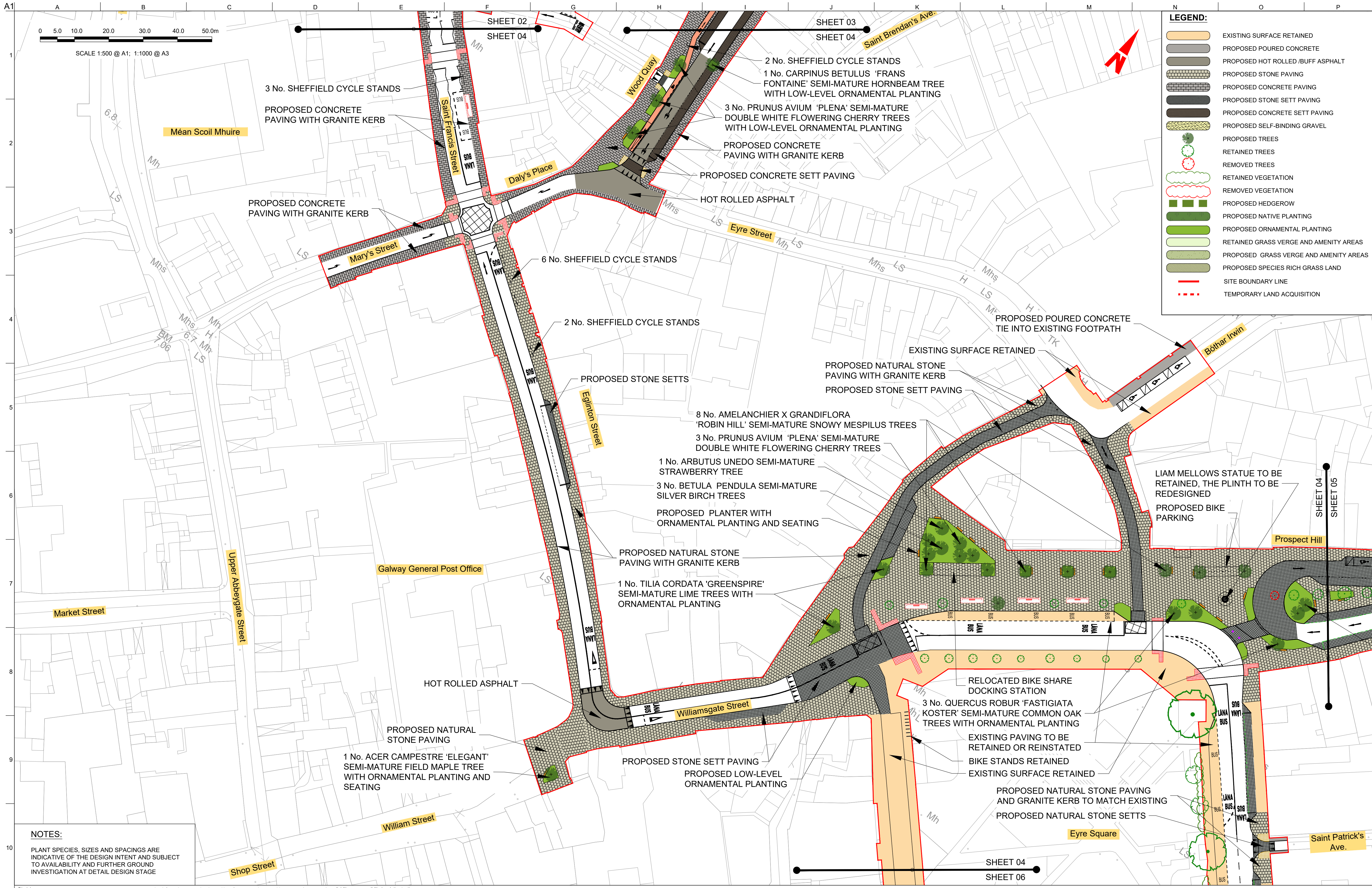
 

Drawing Title

Landscaping General Arrangement

Sheet 03 of 13

Scale at A1	1:500 @ A1 (1:1000 @ A3)	
Role	Transport Infrastructure	
Suitability	Planning	
Arup Job No	253352-00	Rev PL01
Name	BCG-LA-00-03	



NOTES:
PLANT SPECIES, SIZES AND SPACINGS ARE INDICATIVE OF THE DESIGN INTENT AND SUBJECT TO AVAILABILITY AND FURTHER GROUND INVESTIGATION AT DETAIL DESIGN STAGE

Disclaimer

a. © Galway City Council (GCC) 2022. This drawing is confidential and the copyright in it is owned by GCC. This drawing must not be either loaned, copied or otherwise reproduced in whole or in part or used for any purpose without the prior permission of GCC.

b. This drawing is to be used for the design element identified in the titlebox. Other information shown is to be considered indicative only. The drawing is to be read in conjunction with all other relevant design drawings.

c. O.S. data used for plans are printed under © Ordnance Survey Ireland Government of Ireland. All rights reserved. Licence Number EN 0002822 (Ang). All elevations are in metres and relate to OSI Geoid Model (OSGM15) Mean Head. All Co-ordinates are in Irish Transverse Mercator Grid (ITM) as defined by OSI active local GPS station.

d. Information concerning the position of apparatus shown on this drawing is based on drawings supplied by the utility owners and/or the utility works contractor, whilst every care has been taken in the preparation of this drawing, positions should be taken as approximate and are intended for general guidance only and no representation is made by the GCC as to the accuracy, completeness, sufficiency or otherwise of this drawing and the position of the apparatus. The information contained herein does not purport to be comprehensive or final as the apparatus is subject to being altered and/or suspended. Recipients should not rely on this information. Any liabilities are hereby expressly disclaimed.

e. The information contained herein has been provided by the GCC but does not purport to be comprehensive or final. Recipients should not rely on the information. Neither the GCC nor any of its directors, officers, employees, agents, stakeholders or advisers make any representation or warranty as to, or accept any liability or responsibility in relation to, the adequacy, accuracy, reasonableness or completeness of the information provided as part of this document or any matter on which the information is based (including but not limited to loss or damage arising as a result of reliance by recipients on the information or any part of it). Any liabilities are hereby expressly disclaimed.

ARUP

Arup, One Albert Quay,
Cork, T12 X8N6, Ireland
Tel +353 (0)21 422 3200 Fax +353 (0)1 668 3169
www.arup.ie

Client
Galway City Council

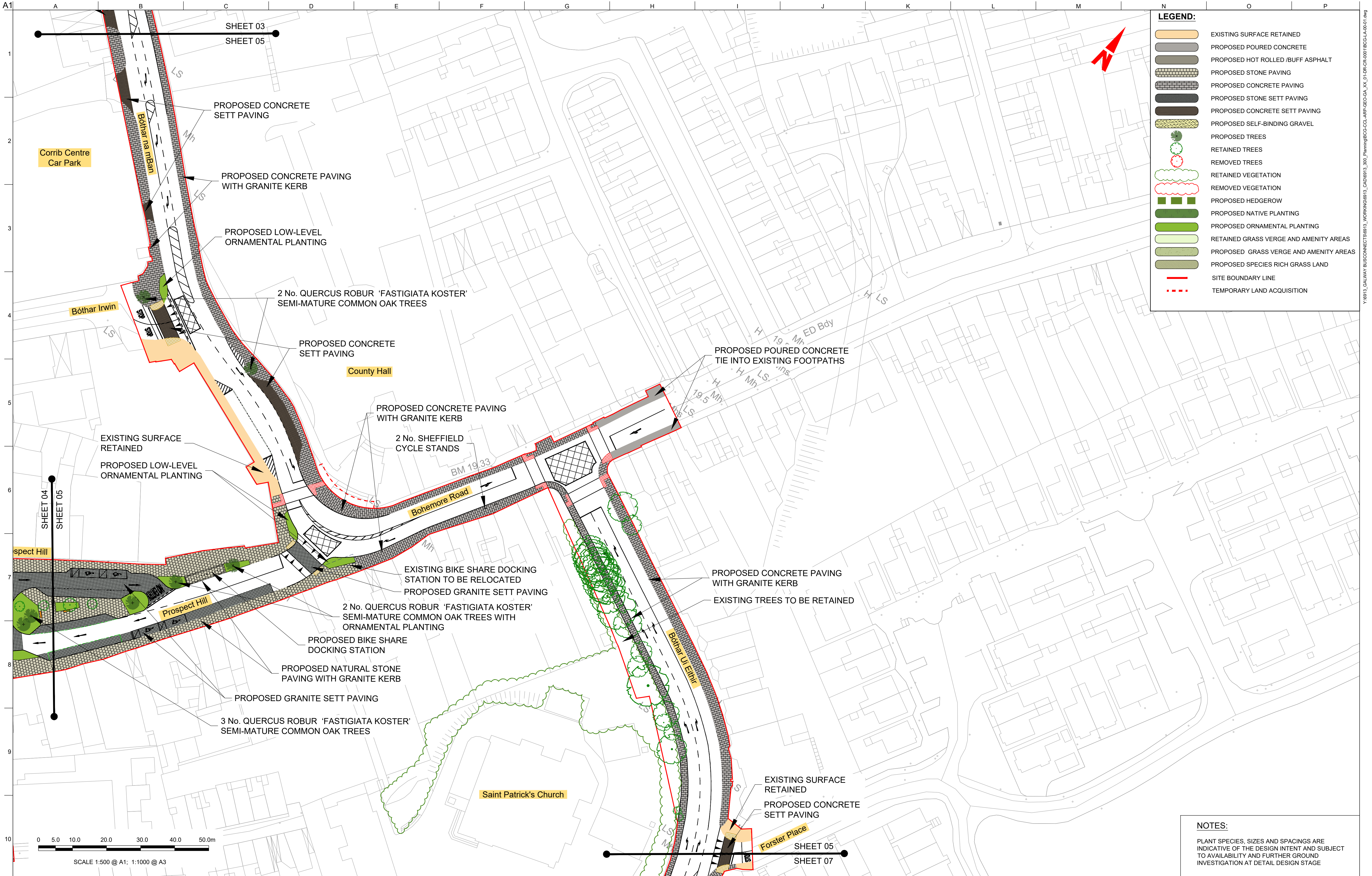
Project Title
**BusConnects Galway:
Cross-City Link
(University Road to Dublin Road)**

Drawing Title
Landscaping General Arrangement

Scale at A1
1:500 @ A1 (1:1000 @ A3)

Role	Transport Infrastructure
Suitability	Planning
Arup Job No	253352-00
Name	BCG-LA-00-04
Rev	PL01

PL01	31/08/22	JV	RN	BB
Issue for Planning				
Rev	Date	By	Chkd	Appd



Disclaimer

a. © Galway City Council (GCC) 2022. This drawing is confidential and the copyright in it is owned by GCC. This drawing must not be either loaned, copied or otherwise reproduced in whole or in part or used for any purpose without the prior permission of GCC.

b. This drawing is to be used for the design element identified in the titlebox. Other information shown is to be considered indicative only. The drawing is to be read in conjunction with all other relevant design drawings.

c. O.S. data used for plans are printed under © Ordnance Survey Ireland Government of Ireland. All rights reserved. Licence Number EN 0002822 (Aug). All elevations are in metres and relate to OSI Geoid Model (OSGM15) Mean Head. All Co-ordinates are in Irish Transverse Mercator Grid (ITM) as defined by OSI active local GPS station.

d. Information concerning the position of apparatus shown on this drawing is based on drawings supplied by the utility owners and/or the utility works contractor, whilst every care has been taken in the preparation of this drawing, positions should be taken as approximate and are intended for general guidance only and no representation is made by the GCC as to the accuracy, completeness, sufficiency or otherwise of this drawing and the position of the apparatus. The information contained herein does not purport to be comprehensive or final as the apparatus is subject to being altered and/or superseded. Recipients should not rely on this information. Any liabilities are hereby expressly disclaimed.

e. The information contained herein has been provided by the GCC but does not purport to be comprehensive or final. Recipients should not rely on the information. Neither the GCC nor any of its directors, officers, employees, agents, stakeholders or advisers make any representation or warranty as to, or accept any liability or responsibility in relation to, the adequacy, accuracy, reasonableness or completeness of the information provided as part of this document or any matter on which the information is based (including but not limited to loss or damage arising as a result of reliance by recipients on the information or any part of it). Any liabilities are hereby expressly disclaimed.

NTA
Údarás Náisiúnta Iompair
National Transport Authority

PL01	31/08/22	JV	RN	BB
Issue for Planning				
Rev	Date	By	Chkd	Appd

Arup, One Albert Quay,
Cork, T12 X8N6, Ireland
Tel +353 (0)21 422 3200 Fax +353 (0)1 668 3169
www.arup.ie

Client
Galway City Council

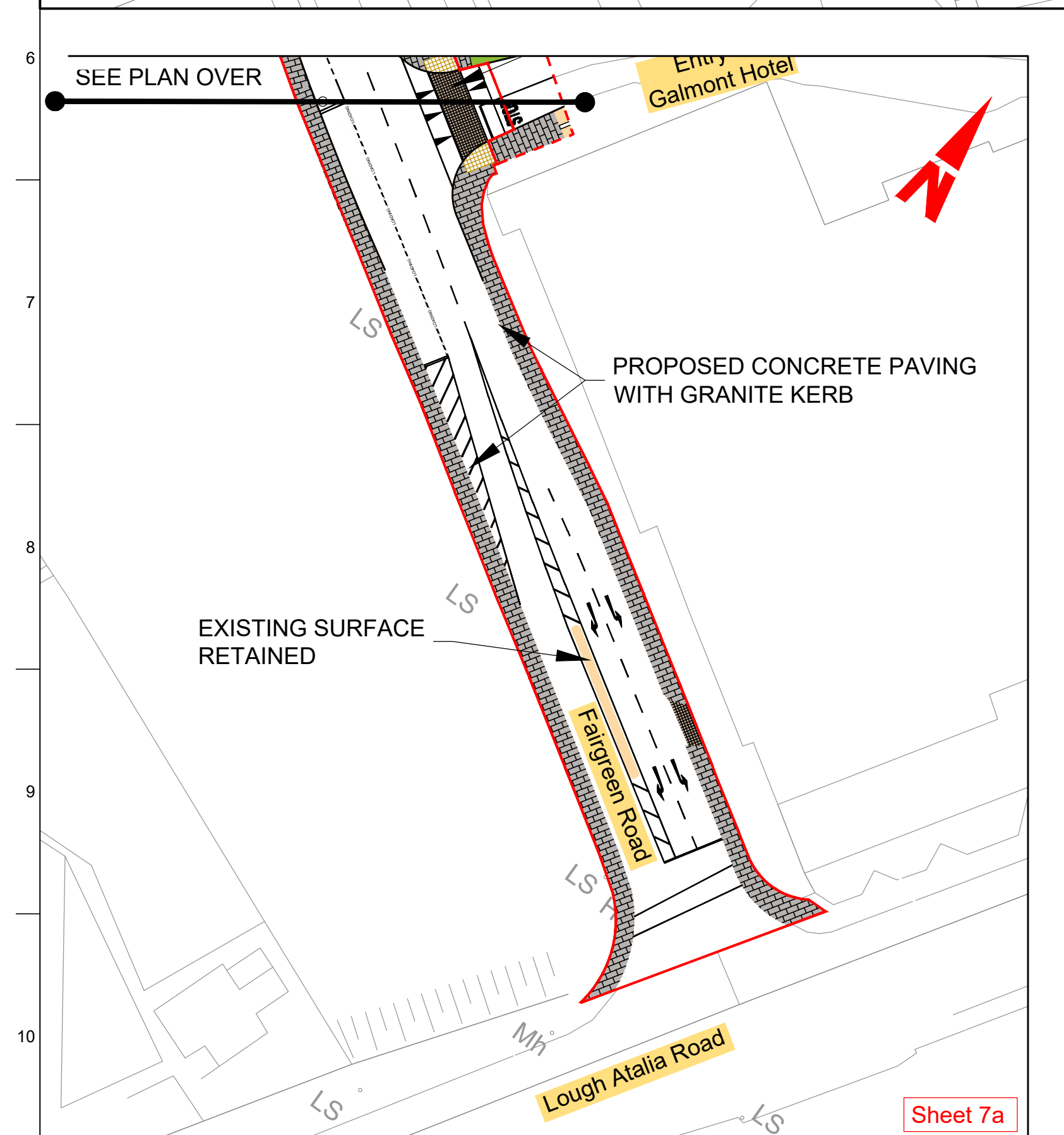
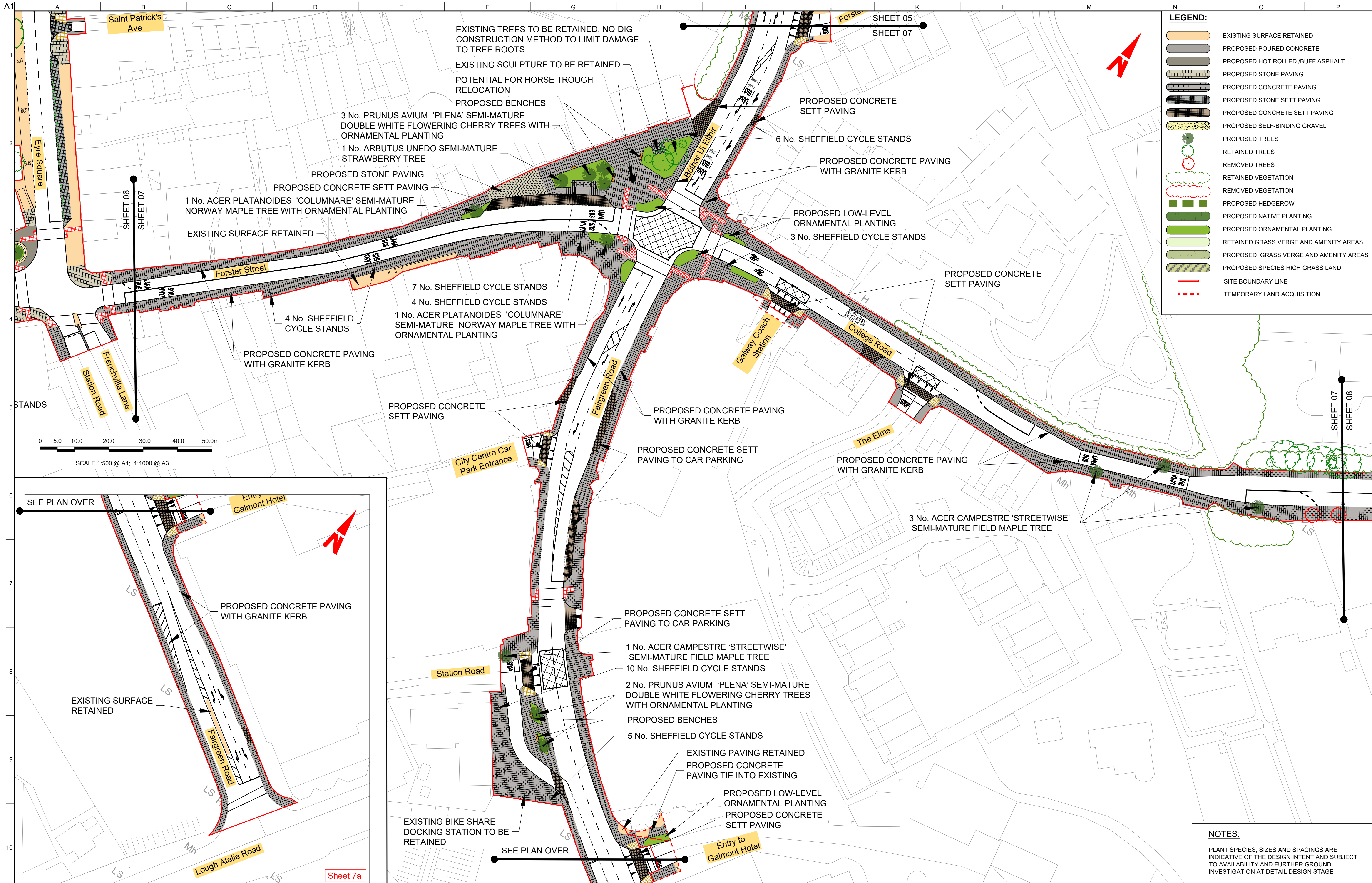
Project Title
BusConnects Galway:
Cross-City Link
(University Road to Dublin Road)

Drawing Title
Landscaping General Arrangement

Sheet 05 of 13

Scale at A1 1:500 @ A1 (1:1000 @ A3)

Role	Transport Infrastructure
Suitability	Planning
Arup Job No	253352-00
Name	BCG-LA-00-05
Rev	PL01



LEGEND:

- EXISTING SURFACE RETAINED
- PROPOSED POURED CONCRETE
- PROPOSED HOT ROLLED /BUFF ASPHALT
- PROPOSED STONE PAVING
- PROPOSED CONCRETE PAVING
- PROPOSED STONE SETT PAVING
- PROPOSED CONCRETE SETT PAVING
- PROPOSED SELF-BINDING GRAVEL
- PROPOSED TREES
- RETAINED TREES
- REMOVED TREES
- RETAINED VEGETATION
- REMOVED VEGETATION
- PROPOSED HEDGEROW
- PROPOSED NATIVE PLANTING
- PROPOSED ORNAMENTAL PLANTING
- RETAINED GRASS VERGE AND AMENITY AREAS
- PROPOSED GRASS VERGE AND AMENITY AREAS
- PROPOSED SPECIES RICH GRASS LAND
- SITE BOUNDARY LINE
- TEMPORARY LAND ACQUISITION

NOTES:

PLANT SPECIES, SIZES AND SPACINGS ARE INDICATIVE OF THE DESIGN INTENT AND SUBJECT TO AVAILABILITY AND FURTHER GROUND INVESTIGATION AT DETAIL DESIGN STAGE

Disclaimer

a. © Galway City Council (GCC) 2022. This drawing is confidential and the copyright in it is owned by GCC. This drawing must not be either loaned, copied or otherwise reproduced in whole or in part or used for any purpose without the prior permission of GCC.

b. This drawing is to be used for the design element identified in the titlebox. Other information shown is to be considered indicative only. The drawing is to be read in conjunction with all other relevant design drawings.

c. O.S. data used for plans are printed under © Ordnance Survey Ireland Government of Ireland. All rights reserved. Licence Number EN 0002822 (Anú). All elevations are in metres and relate to OSI Geoid Model (OSGM15) Mean Head. All Co-ordinates are in Irish Transverse Mercator Grid (ITM) as defined by OSI active local GPS station.

d. Information concerning the position of apparatus shown on this drawing is based on drawings supplied by the utility owners and/or the utility works contractor, whilst every care has been taken in the preparation of this drawing, positions should be taken as approximate and are intended for general guidance only and no representation is made by the GCC as to the accuracy, completeness, sufficiency or otherwise of this drawing and the position of the apparatus. The information contained herein does not purport to be comprehensive or final as the apparatus is subject to being altered and/or superseded. Recipients should not rely on this information. Any liabilities are hereby expressly disclaimed.

e. The information contained herein has been provided by the GCC but does not purport to be comprehensive or final. Recipients should not rely on the information. Neither the GCC nor any of its directors, officers, employees, agents, stakeholders or advisers make any representation or warranty as to, or accept any liability or responsibility in relation to, the adequacy, accuracy, reasonableness or completeness of the information provided as part of this document or any matter on which the information is based (including but not limited to loss or damage arising as a result of reliance by recipients on the information or any part of it). Any liabilities are hereby expressly disclaimed.

NTA
Údarás Náisiúnta Iompair
National Transport Authority

PL01	31/08/22	JV	RN	BB
Issue for Planning				
Rev	Date	By	Chkd	Appd

Arup, One Albert Quay,
Cork, T12 X8N6, Ireland
Tel +353 (0)21 422 3200 Fax +353 (0)1 668 3169
www.arup.ie

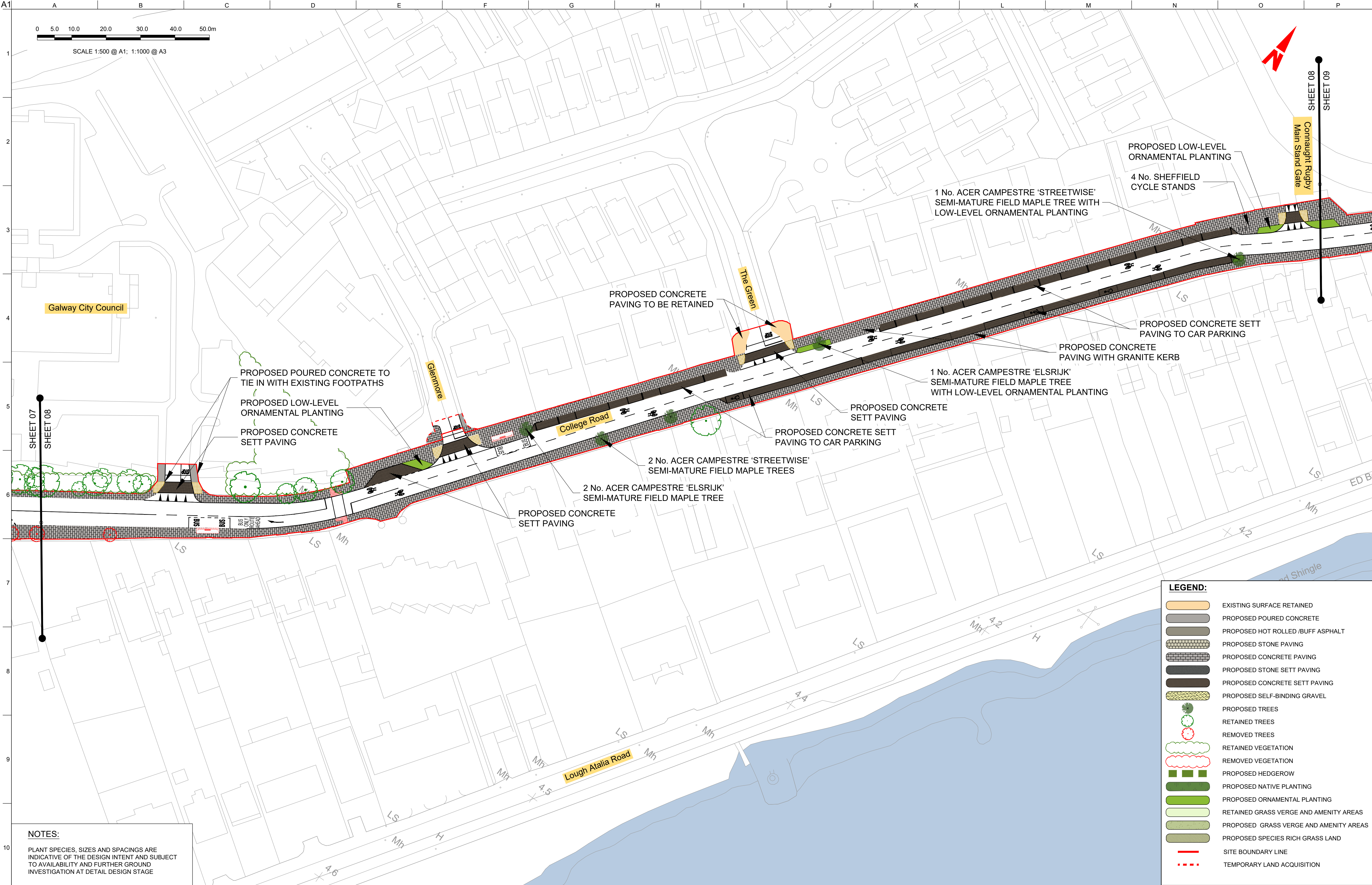
Client
Galway City Council

Project Title
BusConnects Galway: Cross-City Link (University Road to Dublin Road)

Drawing Title
Landscape General Arrangement

Scale at A1: 1:500 @ A1 (1:1000 @ A3)

Role	Transport Infrastructure
Suitability	Planning
Arup Job No	253352-00
Name	BCG-LA-00-07
Rev	PL01



NOTES:

PLANT SPECIES, SIZES AND SPACINGS ARE INDICATIVE OF THE DESIGN INTENT AND SUBJECT TO AVAILABILITY AND FURTHER GROUND INVESTIGATION AT DETAIL DESIGN STAGE

LEGEND:	
	EXISTING SURFACE RETAINED
	PROPOSED POURED CONCRETE
	PROPOSED HOT ROLLED /BUFF ASPHALT
	PROPOSED STONE PAVING
	PROPOSED CONCRETE PAVING
	PROPOSED STONE SETT PAVING
	PROPOSED CONCRETE SETT PAVING
	PROPOSED SELF-BINDING GRAVEL
	PROPOSED TREES
	RETAINED TREES
	REMOVED TREES
	RETAINED VEGETATION
	REMOVED VEGETATION
	PROPOSED HEDGEROW
	PROPOSED NATIVE PLANTING
	PROPOSED ORNAMENTAL PLANTING
	RETAINED GRASS VERGE AND AMENITY AREAS
	PROPOSED GRASS VERGE AND AMENITY AREAS
	PROPOSED SPECIES RICH GRASS LAND
	SITE BOUNDARY LINE
	TEMPORARY LAND ACQUISITION

Disclaimer

a. © Galway City Council (GCC) 2022. This drawing is confidential and the copyright in it is owned by GCC. This drawing must not be either loaned, copied or otherwise reproduced in whole or in part or used for any purpose without the prior permission of GCC.

b. This drawing is to be used for the design element identified in the titlebox. Other information shown is to be considered indicative only. The drawing is to be read in conjunction with all other relevant design drawings.

c. O.S. data used for plans are printed under © Ordnance Survey Ireland Government of Ireland. All rights reserved. Licence Number EN 0002822 (Aup). All elevations are in metres and relate to OSI Geoid Model (OSGM15) Mean Head. All Co-ordinates are in Irish Transverse Mercator Grid (ITM) as defined by OSI active local GPS station.

d. Information concerning the position of apparatus shown on this drawing is based on drawings supplied by the utility owners and/or the utility works contractor, whilst every care has been taken in the preparation of this drawing, positions should be taken as approximate and are intended for general guidance only and no representation is made by the GCC as to the accuracy, completeness, sufficiency or otherwise of this drawing and the position of the apparatus. The information contained herein does not purport to be comprehensive or final as the apparatus is subject to being altered and/or suspended. Recipients should not rely on this information. Any liabilities are hereby expressly disclaimed.

e. The information contained herein has been provided by the GCC but does not purport to be comprehensive or final. Recipients should not rely on the information. Neither the GCC nor any of its directors, officers, employees, agents, stakeholders or advisers make any representation or warranty as to, or accept any liability or responsibility in relation to, the adequacy, accuracy, reasonableness or completeness of the information provided as part of this document or any matter on which the information is based (including but not limited to loss or damage arising as a result of reliance by recipients on the information or any part of it). Any liabilities are hereby expressly disclaimed.

ARUP

Arup, One Albert Quay,
Cork, T12 X8N6, Ireland
Tel +353 (0)21 422 3200 Fax +353 (0)1 668 3169
www.arup.ie

Client
Galway City Council

Project Title
**BusConnects Galway:
Cross-City Link
(University Road to Dublin Road)**

Drawing Title
Landscaping General Arrangement

Scale at A1 **1:500 @ A1 (1:1000 @ A3)**

Role	Transport Infrastructure
Suitability	Planning
Arup Job No	253352-00
Name	BCG-LA-00-08
Rev	PL01

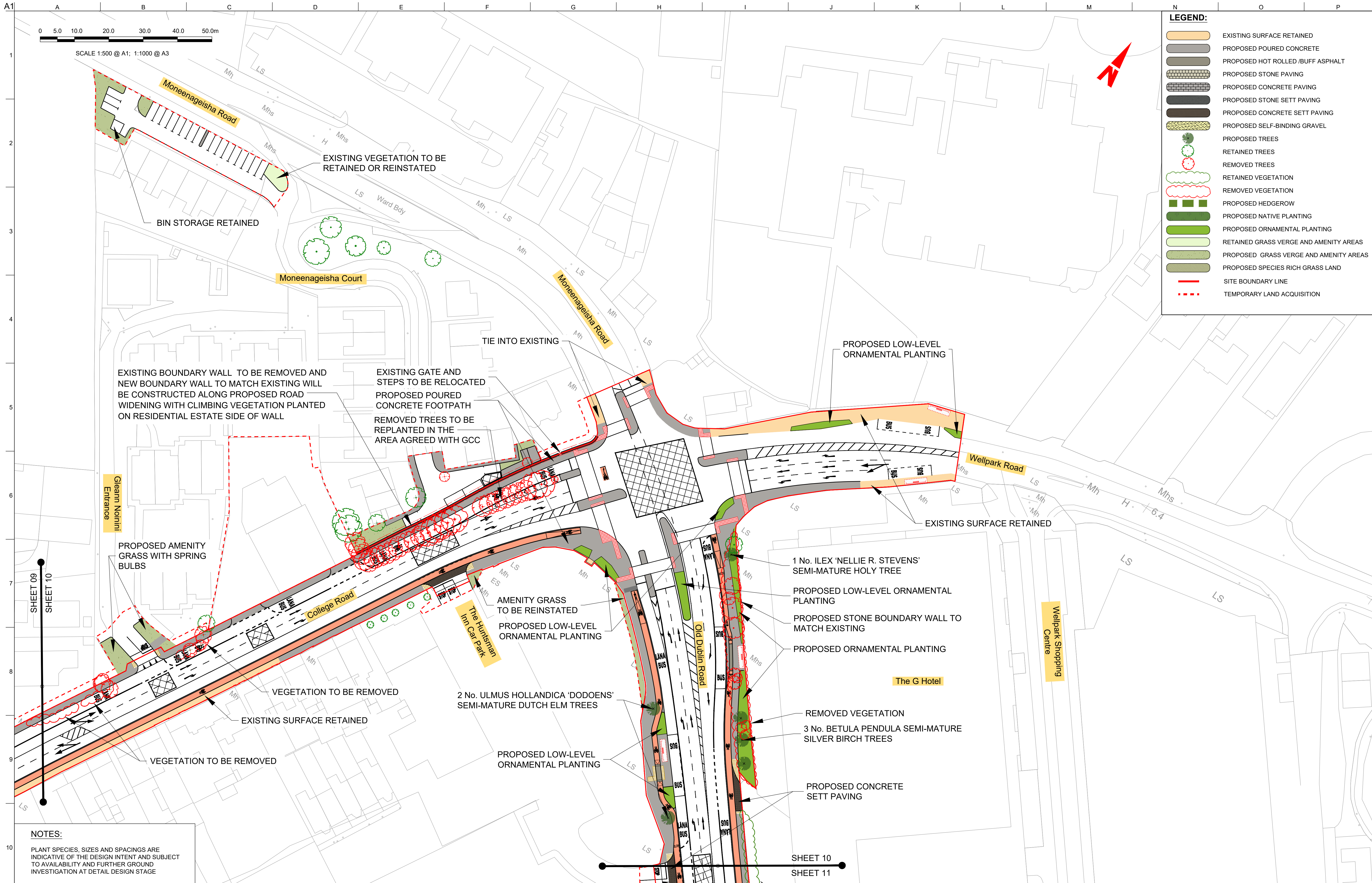
PL01	31/08/22	JV	RN	BB
Issue for Planning				
Rev	Date	By	Chkd	Appd

Map reproduced from Ordnance Survey Ireland Licence No. EN 0002822 ©
Ordnance Survey Ireland/ Government of Ireland.

Do not scale

© Arup





NOTES:

PLANT SPECIES, SIZES AND SPACINGS ARE INDICATIVE OF THE DESIGN INTENT AND SUBJECT TO AVAILABILITY AND FURTHER GROUND INVESTIGATION AT DETAIL DESIGN STAGE

Disclaimer

a. © Galway City Council (GCC) 2022. This drawing is confidential and the copyright in it is owned by GCC. This drawing must not be either loaned, copied or otherwise reproduced in whole or in part or used for any purpose without the prior permission of GCC.

b. This drawing is to be used for the design element identified in the titlebox. Other information shown is to be considered indicative only. The drawing is to be read in conjunction with all other relevant design drawings.

c. O.S. data used for plans are printed under © Ordnance Survey Ireland Government of Ireland. All rights reserved. Licence Number EN 0002822 (Aug). All elevations are in metres and relate to OSI Geoid Model (OSGM15) Mean Sea Level. All Co-ordinates are in Irish Transverse Mercator Grid (ITM) as defined by OSI active local GPS station.

d. Information concerning the position of apparatus shown on this drawing is based on drawings supplied by the utility owners and/or the utility works contractor, whilst every care has been taken in the preparation of this drawing, positions should be taken as approximate and are intended for general guidance only and no representation is made by the GCC as to the accuracy, completeness, sufficiency or otherwise of this drawing and the position of the apparatus. The information contained herein does not purport to be comprehensive or final as the apparatus is subject to being altered and/or suspended. Recipients should not rely on this information. Any liabilities are hereby expressly disclaimed.

e. The information contained herein has been provided by the GCC but does not purport to be comprehensive or final. Recipients should not rely on the information. Neither the GCC nor any of its directors, officers, employees, agents, stakeholders or advisers make any representation or warranty as to, or accept any liability or responsibility in relation to, the adequacy, accuracy, reasonableness or completeness of the information provided as part of this document or any matter on which the information is based (including but not limited to loss or damage arising as a result of reliance by recipients on the information or any part of it). Any liabilities are hereby expressly disclaimed.

ARUP

Arup, One Albert Quay,
Cork, T12 X8N6, Ireland
Tel +353 (0)21 422 3200 Fax +353 (0)1 668 3169
www.arup.ie

Client
Galway City Council

Project Title
**BusConnects Galway:
Cross-City Link
(University Road to Dublin Road)**

Drawing Title
Landscaping General Arrangement

Scale at A1 **1:500 @ A1 (1:1000 @ A3)**

Role	Transport Infrastructure
Suitability	Planning
Arup Job No	253352-00
Name	BCG-LA-00-10
Rev	PL01

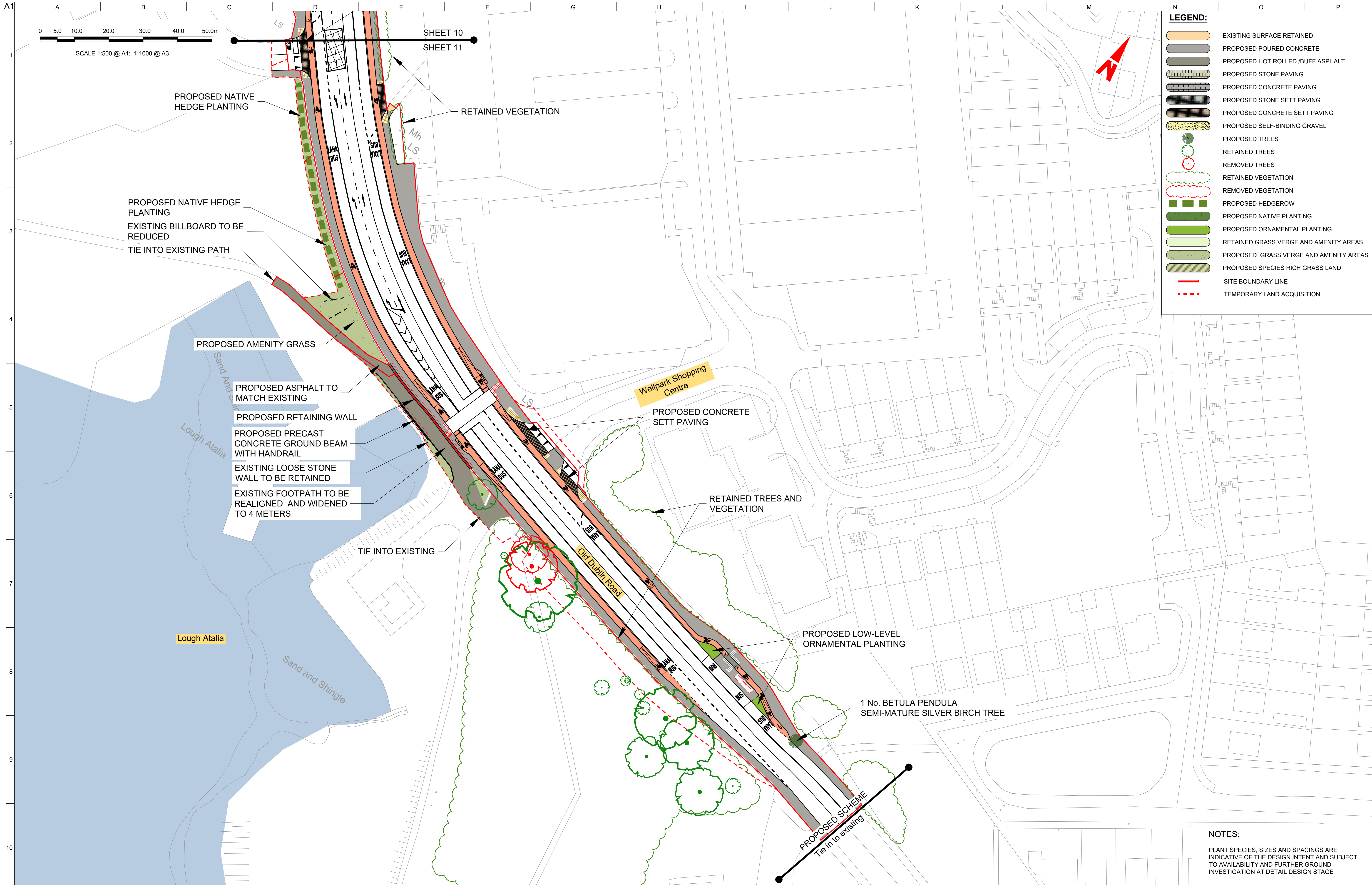
PL01	31/08/22	JV	RN	BB
Issue for Planning				
Rev	Date	By	Chkd	Appd

NTA
Údarás Náisiúnta Iompair
National Transport Authority

Map reproduced from Ordnance Survey Ireland Licence No. EN 0002822 ©
Ordnance Survey Ireland/ Government of Ireland.

Do not scale

© Arup



Disclaimer

a. © Galway City Council (GCC) 2022. This drawing is confidential and the copyright in it is owned by GCC. This drawing must not be either loaned, copied or otherwise reproduced in whole or in part or used for any purpose without the prior permission of GCC.

b. This drawing is to be used for the design element identified in the titlebox. Other information shown is to be considered indicative only. The drawing is to be read in conjunction with all other relevant design drawings.

c. O.S. data used for plans are printed under © Ordnance Survey Ireland Government of Ireland. All rights reserved. Licence Number EN 0002822 (Anp). All elevations are in metres and relate to OSI Geoid Model (OSGM15) Mean Head. All Co-ordinates are in Irish Transverse Mercator Grid (ITM) as defined by OSI active local GPS station.

d. Information concerning the position of apparatus shown on this drawing is based on drawings supplied by the utility owners and/or the utility works contractor, whilst every care has been taken in the preparation of this drawing, positions should be taken as approximate and are intended for general guidance only and no representation is made by the GCC as to the accuracy, completeness, sufficiency or otherwise of this drawing and the position of the apparatus. The information contained herein does not purport to be comprehensive or final as the apparatus is subject to being altered and/or suspended. Recipients should not rely on this information. Any liabilities are hereby expressly disclaimed.

e. The information contained herein has been provided by the GCC but does not purport to be comprehensive or final. Recipients should not rely on the information. Neither the GCC nor any of its directors, officers, employees, agents, stakeholders or advisers make any representation or warranty as to, or accept any liability or responsibility in relation to, the adequacy, accuracy, reasonableness or completeness of the information provided as part of this document or any matter on which the information is based (including but not limited to loss or damage arising as a result of reliance by recipients on the information or any part of it). Any liabilities are hereby expressly disclaimed.

NTA
Údarás Náisiúnta Iompair
National Transport Authority

PL01	31/08/22	JV	RN	BB
Issue for Planning				
Rev	Date	By	Chkd	Appd

Arup, One Albert Quay,
Cork, T12 X8N6, Ireland
Tel +353 (0)21 422 3200 Fax +353 (0)1 668 3169
www.arup.ie

Client
Galway City Council

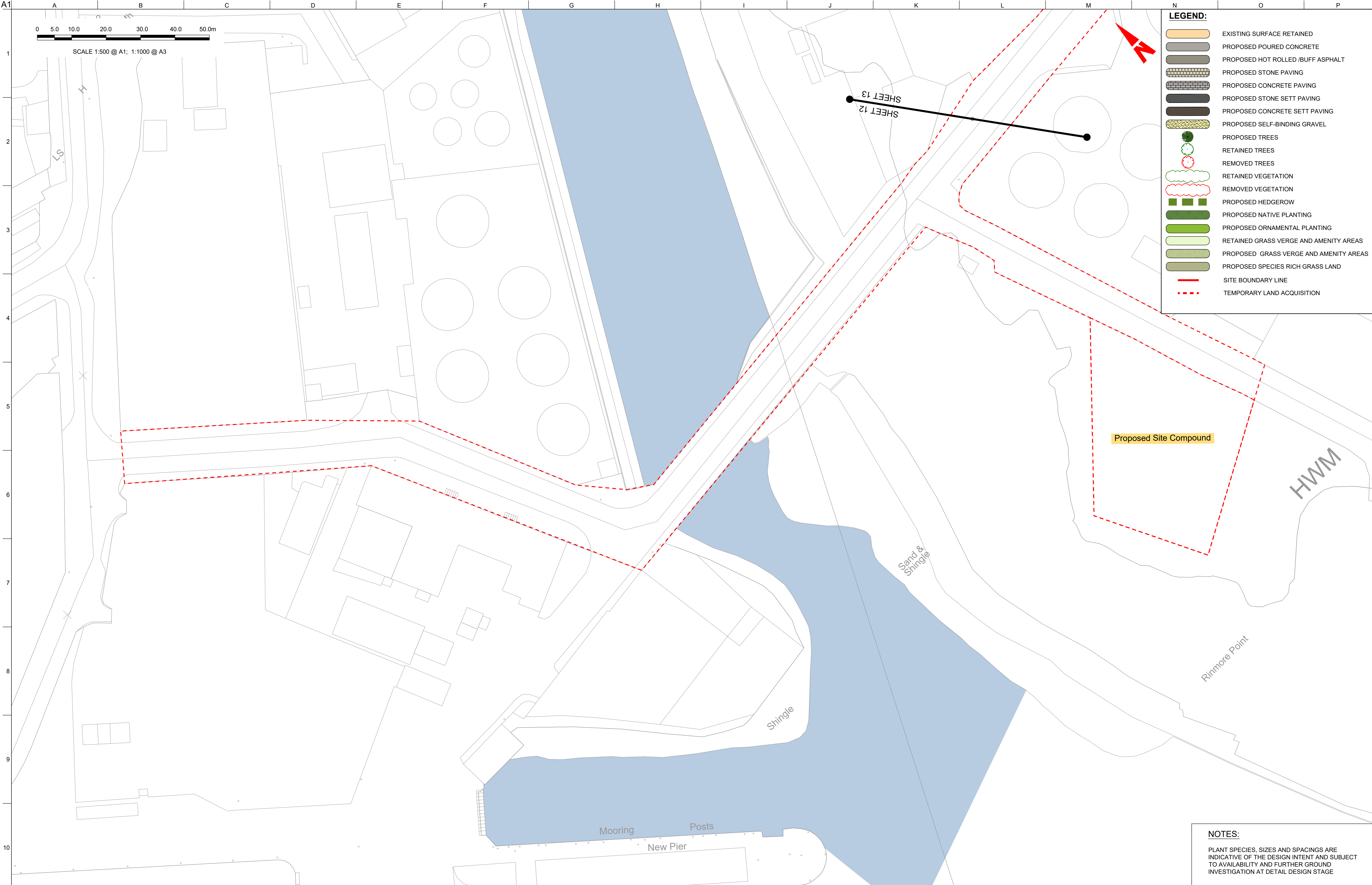
Project Title
BusConnects Galway:
Cross-City Link
(University Road to Dublin Road)

Drawing Title
Landscaping General Arrangement

Sheet 11 of 13

Scale at A1 1:500 @ A1 (1:1000 @ A3)

Role Transport Infrastructure	Rev PL01
Suitability Planning	
Arup Job No 253352-00	
Name BCG-LA-00-11	



Disclaimer

a. © Galway City Council (GCC) 2022. This drawing is confidential and the copyright in it is owned by GCC. This drawing must not be either loaned, copied or otherwise reproduced in whole or in part or used for any purpose without the prior permission of GCC.

b. This drawing is to be used for the design element identified in the titlebox. Other information shown is to be considered indicative only. The drawing is to be read in conjunction with all other relevant design drawings.

c. O.S. data used for plans are printed under © Ordnance Survey Ireland Government of Ireland. All rights reserved. Licence Number EN 0002822 (Anup). All elevations are in metres and relate to OSI Geoid Model (OSGM15) Mean Sea Level. All Co-ordinates are in Irish Transverse Mercator Grid (ITM) as defined by OSI active local GPS station.

d. Information concerning the position of apparatus shown on this drawing is based on drawings supplied by the utility owners and/or the utility works contractor, whilst every care has been taken in the preparation of this drawing, positions should be taken as approximate and are intended for general guidance only and no representation is made by the GCC as to the accuracy, completeness, sufficiency or otherwise of this drawing and the position of the apparatus. The information contained herein does not purport to be comprehensive or final as the apparatus is subject to being altered and/or suspended. Recipients should not rely on this information. Any liabilities are hereby expressly disclaimed.

e. The information contained herein has been provided by the GCC but does not purport to be comprehensive or final. Recipients should not rely on the information. Neither the GCC nor any of its directors, officers, employees, agents, stakeholders or advisers make any representation or warranty as to, or accept any liability or responsibility in relation to, the adequacy, accuracy, reasonableness or completeness of the information provided as part of this document or any matter on which the information is based (including but not limited to loss or damage arising as a result of reliance by recipients on the information or any part of it). Any liabilities are hereby expressly disclaimed.

NTA
Údarás Náisiúnta Iompair
National Transport Authority

PL01	31/08/22	JV	RN	BB
Issue for Planning				
Rev	Date	By	Chkd	Appd

Arup, One Albert Quay,
Cork, T12 X8N6, Ireland
Tel +353 (0)21 422 3200 Fax +353 (0)1 668 3169
www.arup.ie

Client
Galway City Council

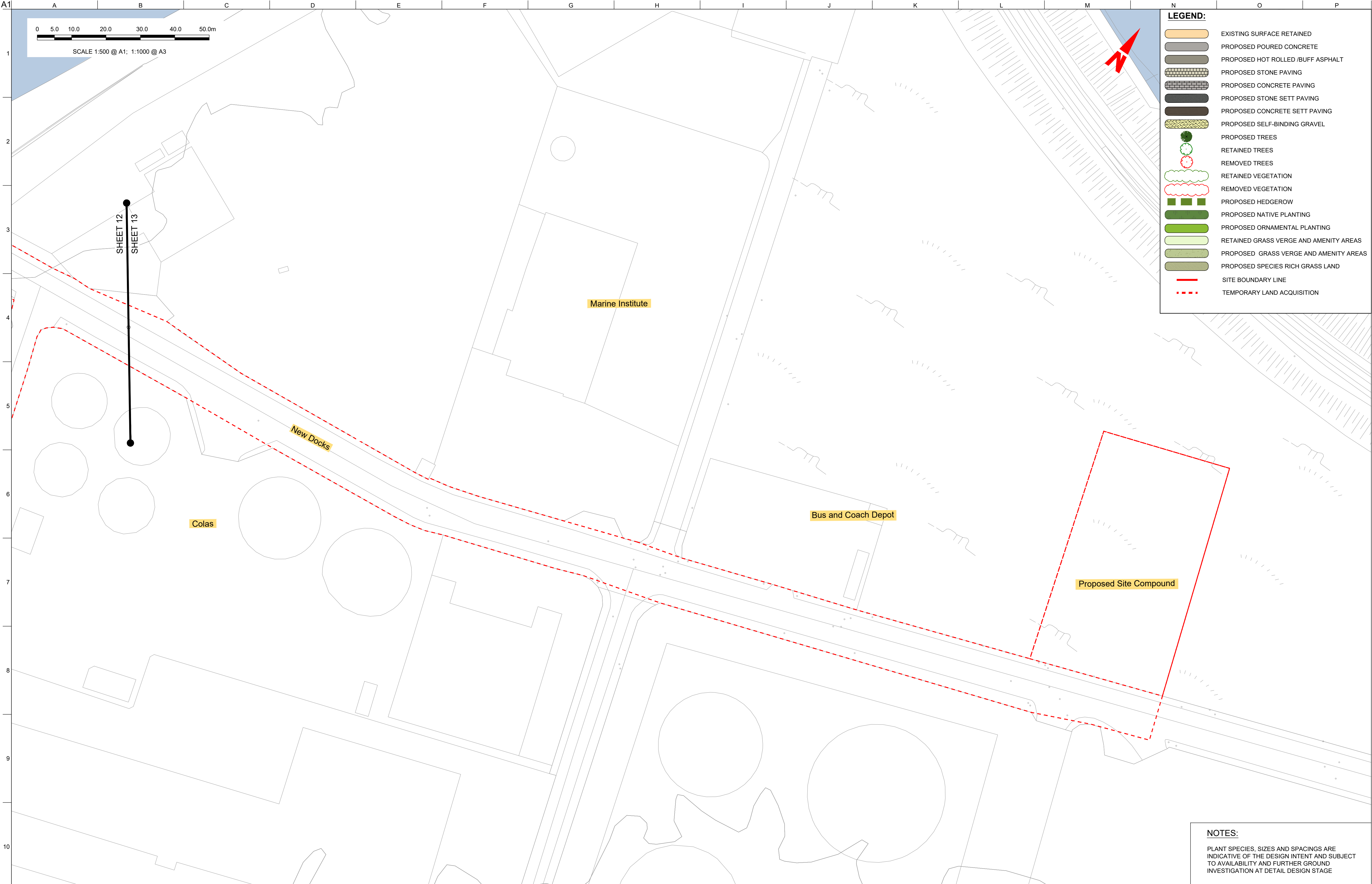
Project Title
**BusConnects Galway:
Cross-City Link
(University Road to Dublin Road)**

Drawing Title
Landscaping General Arrangement

Sheet 12 of 13

Scale at A1
1:500 @ A1 (1:1000 @ A3)

Role Transport Infrastructure	Rev PL01
Suitability Planning	
Arup Job No 253352-00	
Name BCG-LA-00-12	



LEGEND:

EXISTING SURFACE RETAINED

PROPOSED POURED CONCRETE

PROPOSED HOT ROLLED /BUFF ASPHALT

PROPOSED STONE PAVING

PROPOSED CONCRETE PAVING

PROPOSED STONE SETT PAVING

PROPOSED CONCRETE SETT PAVING

PROPOSED SELF-BINDING GRAVEL

PROPOSED TREES

RETAINED TREES

REMOVED TREES

RETAINED VEGETATION

REMOVED VEGETATION

PROPOSED HEDGEROW

PROPOSED NATIVE PLANTING

PROPOSED ORNAMENTAL PLANTING

RETAINED GRASS VERGE AND AMENITY AREAS

PROPOSED GRASS VERGE AND AMENITY AREAS

PROPOSED SPECIES RICH GRASS LAND

SITE BOUNDARY LINE

TEMPORARY LAND ACQUISITION

NOTES:

PLANT SPECIES, SIZES AND SPACINGS ARE INDICATIVE OF THE DESIGN INTENT AND SUBJECT TO AVAILABILITY AND FURTHER GROUND INVESTIGATION AT DETAIL DESIGN STAGE

Disclaimer

a. © Galway City Council (GCC) 2022. This drawing is confidential and the copyright in it is owned by GCC. This drawing must not be either loaned, copied or otherwise reproduced in whole or in part or used for any purpose without the prior permission of GCC.

b. This drawing is to be used for the design element identified in the titlebox. Other information shown is to be considered indicative only. The drawing is to be read in conjunction with all other relevant design drawings.

c. O.S. data used for plans are printed under © Ordnance Survey Ireland Government of Ireland. All rights reserved. Licence Number EN 0002822 (Anup). All elevations are in metres and relate to OSI Geoid Model (OSGM15) Mean High Water. All Co-ordinates are in Irish Transverse Mercator Grid (ITM) as defined by OSI active local GPS station.

d. Information concerning the position of apparatus shown on this drawing is based on drawings supplied by the utility owners and/or the utility works contractor, whilst every care has been taken in the preparation of this drawing, positions should be taken as approximate and are intended for general guidance only and no representation is made by the GCC as to the accuracy, completeness, sufficiency or otherwise of this drawing and the position of the apparatus. The information contained herein does not purport to be comprehensive or final as the apparatus is subject to being altered and/or suspended. Recipients should not rely on this information. Any liabilities are hereby expressly disclaimed.

e. The information contained herein has been provided by the GCC but does not purport to be comprehensive or final. Recipients should not rely on the information. Neither the GCC nor any of its directors, officers, employees, agents, stakeholders or advisers make any representation or warranty as to, or accept any liability or responsibility in relation to, the adequacy, accuracy, reasonableness or completeness of the information provided as part of this document or any matter on which the information is based (including but not limited to loss or damage arising as a result of reliance by recipients on the information or any part of it). Any liabilities are hereby expressly disclaimed.

NTA

Údarás Náisiúnta Iompair

National Transport Authority

ARUP

Anup, One Albert Quay,
Cork, T12 X8N6, Ireland
Tel +353 (0)21 422 3200 Fax +353 (0)1 668 3169
www.arup.ie

Client

Galway City Council

Project Title

BusConnects Galway:
Cross-City Link
(University Road to Dublin Road)

BUS CONNECTS GALWAY

TRANSFORMING CITY AND REGION

Project Ireland 2040

Building Ireland's Future

Drawing Title

Landscaping General Arrangement

Sheet 13 of 13

Scale at A1

1:500 @ A1 (1:1000 @ A3)

Role

Transport Infrastructure

Suitability

Planning

Arup Job No

253352-00

Rev

PL01

Name

BCG-LA-00-13

Do not scale

Map reproduced from Ordnance Survey Ireland Licence No. EN 0002822 © Ordnance Survey Ireland/ Government of Ireland.

© Arup